



JL INDUSTRIES
INCORPORATED

FIRE EXTINGUISHERS

DETAIL AND SUBMITTAL SHEET

MODEL NUMBER: FE10B QUANTITY: Five (5)

DISTRIBUTOR: Powers Products Co.

PROJECT: LCCC Albany County Campus

ARCHITECT: Midyette

CONTRACTOR: Taylor Kohrs

APPROVED BY: _____ DATE: _____

GRENADIER: PRESSURIZED WATER

GENERAL DATA: The "water press" extinguisher contains water and compressed air. This unit is operated by simply squeezing the lever which opens the valve allowing the water to be forced out. It's especially effective on deep seated Class A fires. Units shipped empty.
FEATURES: Butt-welded 304-L stainless steel cylinder (eliminates all internal and external crevices). Rugged stainless steel discharge lever and fixed carry handle. Heavy duty, brass, chrome-plated valve body. Replaceable molded valve stem seal. U/L labeled chemical engine hose. Visual pressure gauge. Pull pin. Upright squeeze grip operation. CLASS A FIRES

*****COSMIC: MULTI-PURPOSE CHEMICAL**

GENERAL DATA: These units contain specially fluidized and siliconized mono ammonium phosphate powder which smothers and breaks the chain reaction on Class B fires, fuses and insulates Class A fires, and is a non-conductor of electricity. Truly an all purpose extinguisher, the ABC Dry Chemical is the most popular unit currently on the market.
FEATURES: Heavy duty steel cylinder. Rugged metal valve and siphon tube. Replaceable molded valve stem seal. Exclusive corrosion and impact resistant epoxy finish. Visual pressure gauge. Pull pin. Upright squeeze grip operation approved to -65°F (-52°C) Non-Toxic. CLASS A,B,C FIRES

SENTINEL: CARBON DIOXIDE

GENERAL DATA: This extinguisher contains liquid carbon dioxide under pressure which is released by depressing the valve lever. The discharge, which changes into a gas and appears as a smothering cloud of white snow, is then directed to the fire through a funnel shaped horn. The clean agent is particularly effective on small Class B fires and is a non-conductor of electricity.
FEATURES: High pressure aluminum cylinder. Absolutely rust free and up to 30% lighter than CO₂ units with steel cylinders. O-Ring seal, straight thread brass valve fits all sizes. CLASS B,C FIRES

GALAXY: REGULAR DRY CHEMICAL

GENERAL DATA: These models contain a siliconized sodium bicarbonate base, the traditional dry chemical design. The Galaxy series can be an economical choice for Class B and Class C fire protection, due to generally lower recharging costs. Clean up after use is relatively easy because the chemical does not normally bake to a hot metal surface
FEATURES: Heavy duty steel cylinder. Rugged metal valve and siphon tube. Replaceable model valve stem seal. Exclusive corrosion and impact resistant epoxy finish. Visual pressure gauge. Pull pin. Upright squeeze grip operation on Approved to -65°F (-52°C) Non-Toxic. CLASS B,C FIRES

MERCURY: HALOTRON 1

GENERAL DATA: JL introduces a new line of clean agent portable fire extinguishers which have the EPA approved, government accepted and specified clean extinguishing agent Halotron 1. This agent discharges as a liquid, then quickly evaporates leaving no residue to clean up afterwards.
FEATURES: Drawn steel cylinders with steel siphon tubes. Power cone discharge stream. Corrosion resistant paint finish. Visual pressure gauge. Temperature range from -40F to +120F. CLASS A, B, C FIRES

SATURN: WET CHEMICAL

GENERAL DATA: These units make for the ideal choice for commercial restaurant applications. These extinguishers have been designed to offer the best possible portable fire protection available to supplement pre-engineered restaurant appliance fire suppression systems. A low "pH" potassium acetate solution is discharged in a fine mist that provides excellent range while it prevents splashing, creating an effective saponification foam type blanket necessary for suppressing liquid cooking media fires.
FEATURES: Protective nozzle tip orifice seal. Industry standard discharge horn and nozzle design. Nameplate showing only the class "K" symbol. Non-metallic nozzle tip finger guard. Full stainless steel extinguisher shell construction. CLASS K FIRES



CLASS A FIRES - PAPER, WOOD, CLOTH, ETC., WHERE QUENCHING BY WATER OR INSULATING BY DRY CHEMICAL IS EFFECTIVE.



CLASS B FIRES - FLAMMABLE LIQUIDS WHERE SMOTHERING ACTION IS REQUIRED.



CLASS C FIRES - LIVE ELECTRICAL EQUIPMENT WHERE THE NON-CONDUCTIVITY OF EXTINGUISHANT IS VITAL.



CLASS K FIRES CALL J.L. INDUSTRIES FOR MORE INFORMATION

JL INDUSTRIES FAX: 952-835-2218 – 4450 W. 78th St. Circle, Bloomington, MN 55435 **PHONE: 952-835-6850**
JL WEST COAST FAX: 323-726-9068 – 6285 Randolph Street, Commerce, CA 90040 **PHONE: 323-726-9070**
JL SOUTH EAST FAX: 239-693-7501 – 5758 Corporation Circle, FT. Myers, FL 33905 **PHONE: 239-693-7500**

Visit our website for additional specification information.

www.jlindustries.com

FIRE EXTINGUISHER SIZES, CAPACITY, RATINGS IN IMPERIAL

MODEL #	NOMINAL CAPACITY	SHIPPING WEIGHT	CYLINDER DIAMETER	OVERALL HEIGHT	OVERALL WIDTH	SHIPPING VOLUME CU. FT.	U/L RATING	MARK BRACKET	U.S.C.G.** APPROVED
<input type="checkbox"/> GRENADE P	2 1/2 gal.	7 1/2 lbs.	7"	24 1/2"	9"	1.1	2A	MB810	YES
<input type="checkbox"/> COSMIC 2 1/2E	2 1/2 lbs.	5 1/2 lbs.	3"	14 3/4"	5 3/4"	.2	1A -10BC	MB817*	YES
<input type="checkbox"/> COSMIC 5E	5 lbs.	9 1/4 lbs.	4 1/4"	15 1/4"	7 1/4"	.3	2A -10BC	MB818	YES
<input type="checkbox"/> COSMIC 5X	5 lbs.	9 1/4 lbs.	4 1/4"	15 1/4"	7 1/4"	.3	3A -40BC	MB818	YES
<input type="checkbox"/> COSMIC 6E	6 lbs.	12 lbs.	5"	16"	7 3/4"	.4	3A -40BC	MB808	YES
<input checked="" type="checkbox"/> COSMIC 10E	10 lbs.	16 3/4 lbs.	5"	20 1/2"	7 3/4"	.5	4A -60BC	MB846	YES
<input type="checkbox"/> COSMIC 20E	20 lbs.	39 lbs.	7"	24"	10 1/4"	.9	20A -120BC	MB810	YES
<input type="checkbox"/> SENTINEL 5	5 lbs.	14 lbs.	5 1/4"	17 3/4"	8 1/4"	.6	5BC	MB862	YES
<input type="checkbox"/> SENTINEL 10	10 lbs.	28 1/4 lbs.	7"	24"	12"	1.2	10BC	MB810	YES
<input type="checkbox"/> SENTINEL 15	15 lbs.	37 3/4 lbs.	7"	30"	12"	1.5	10BC	MB864	YES
<input type="checkbox"/> SENTINEL 20	20 lbs.	50 3/4 lbs.	8"	30"	13"	1.8	10BC	MB811	YES
<input type="checkbox"/> GALAXY 2 1/2	2 1/2 lbs.	5 1/2 lbs.	3"	14 3/4"	5 3/4"	.2	10BC	MB817*	YES
<input type="checkbox"/> GALAXY 5	5 lbs.	9 lbs.	4 1/4"	15 1/4"	5 1/2"	.3	10BC	MB818*	YES
<input type="checkbox"/> GALAXY 5 1/2	5 1/2 lbs.	9 1/2 lbs.	4 1/4"	15 1/4"	7 1/4"	.4	40BC	MB818	YES
<input type="checkbox"/> GALAXY 6	6 lbs.	13 lbs.	5"	16 1/4"	8 1/2"	.4	40BC	MB808	YES
<input type="checkbox"/> GALAXY 10	10 lbs.	18 lbs.	5"	20 1/2"	8 1/2"	.5	60BC	MB846	YES
<input type="checkbox"/> GALAXY 20	20 lbs.	38 1/2 lbs.	7"	24"	10 1/4"	.9	120BC	MB810	YES
<input type="checkbox"/> MERCURY 2 1/2	2 1/2 lbs.	6 1/4 lbs.	3"	14 7/8"	6 1/8"	.25	2BC	MB817	YES
<input type="checkbox"/> MERCURY 5	5 lbs.	10 lbs.	4 1/4"	15 1/4"	6 1/8"	.3	5BC	MB818	YES
<input type="checkbox"/> MERCURY 11	11 lbs.	23 lbs.	7 1/4"	20 1/2"	9 1/4"	1.0	1A-10BC	MB822	YES
<input type="checkbox"/> MERCURY 15 1/2	15 1/2 lbs.	26 1/2 lbs.	7 1/4"	20 1/2"	9 1/4"	1.0	2A-10BC	MB822	YES
<input type="checkbox"/> SATURN 15	6 liters	15 lbs.	7"	19 1/2"	14"	1.0	K	MB810	-
<input type="checkbox"/> SATURN 25	2 1/2 gal.	19 lbs.	7"	25"	14"	1.1	K	MB810	-

* INDICATES MARK BRACKET STANDARD. J HOOK WALL BRACKET STANDARD WITH ALL OTHER EXTINGUISHERS.
 ** UNITED STATES COAST GUARD APPROVED.

Note: J.L. extinguishers are shipped fully charged with the exception of the Grenadier P and the Saturn 15 and 25. NFPA regulations also require extinguishers to be inspected when initially placed in service and all local fire code and tagging requirements must be adhered to. ALL FIRE EXTINGUISHER SIZES ARE NOMINAL.

Look to J.L. Industries for Additional Products Including: • Access Panels • Roof Hatches • Floor Doors • Floor Mats and Gratings • Security Products • Life Safety - Automated External Defibrillators, Emergency Oxygen and Cabinets



JL INDUSTRIES
INCORPORATED

4450 W. 78th Street Circle
Bloomington, MN 55435
Phone: 952-835-6850
FAX: 952-835-2218

DETAIL AND SUBMITTAL SHEET

DISTRIBUTOR: Powers Products Co. CONTRACTOR: Taylor Kohrs

MODEL NUMBER: C5624W17 PROJECT: LCCC Albany County Campus

QUANTITY: Five (5) APPROVED BY: _____

ARCHITECT: Midyette DATE: 9/28/05

JL WEST COAST 6285 RANDOLPH STREET, COMMERCE, CA 90040 PHONE: 323-726-9070 FAX: 323-726-9068
JL SOUTH EAST 5758 CORPORATION CIRCLE, FT. MEYERS, FL. PHONE: 941-693-7500 FAX: 941-693-7501

EMBASSY FIRE EXTINGUISHER CABINETS

THE EMBASSY SERIES

A concealed hinge and handle gives our Embassy Series a streamlined modern appearance. Only the door extends from the surface of the wall, hanging from the wall in a distinguished, unadorned fashion.

SPECIFICATIONS

The Embassy Series is constructed quite differently from all of our other cabinet series. A flanged tub, and oversized door that completely covers this flange, a concealed hinge and a concealed handle are among its unique features. The tub of the Embassy is white epoxy coated cold rolled steel unless otherwise specified in options. Cabinet doors consist of a formed design with 7/8" nominal thickness. The Embassy is available with steel, aluminum, stainless steel, bronze or brass doors, which come in the following standard finishes. All J.L. Embassy cabinets shown below meet the A.D.A. projection criteria.

- Steel: White epoxy primer coated cold rolled steel door
- Aluminum: #180 clear anodized aluminum door
- Stainless Steel: U.S. #4 satin stainless steel door
- Bronze: U.S.10 satin bronze door
- Brass: U.S.3 polished brass door

A roller catch comes standard with all Embassy doors, except the W door style, which includes the SAF-T-LOK.

1. AVAILABLE DOOR STYLES (SELECT ONE)

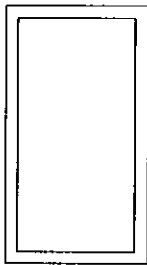
- S21 SOLID
 V CONTEMPORARY V
 W CONTEMPORARY V WITH SAF-T-LOK

2. AVAILABLE DOOR GLAZING (SELECT ONE)

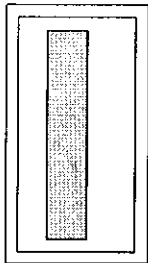
- 10 CLEAR ACRYLIC
 13 CLEAR WIRE GLASS
 15 BRONZE ACRYLIC
 16 GRAY ACRYLIC
 17 CLEAR TEMP. GLASS
 18 LAMINATED SAFETY GLASS

3. OPTIONS (SELECT ONE)

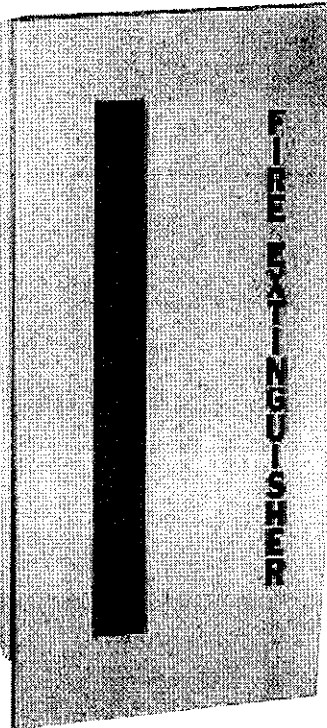
- ALUMINUM TUB: FOR ALUMINUM ONLY
 COLOR EPOXY COATED TUB
 COLOR EPOXY COATED DOOR: FOR STEEL ONLY
 COLOR ANODIZED DOOR: FOR ALUMINUM ONLY
 FE LETTERS IN BLACK, RED OR WHITE
 FUTURA FIRE HANDLE
 U.S. #4 STAINLESS STEEL TUB: FOR STAINLESS STEEL ONLY
 #6 SATIN STAINLESS DOOR
 #7 POLISHED STAINLESS DOOR
 #8 POLISHED STAINLESS DOOR
 U.S. 9 POLISHED BRONZE DOOR CLEAR COATED
 U.S.10B OIL RUBBED BRONZE DOOR
 U.S. 4 SATIN BRASS DOOR CLEAR COATED



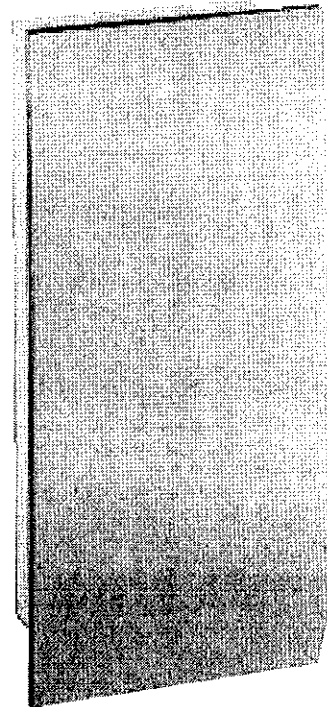
S21
SOLID PANEL



V10 VERTICAL
DUO PANEL



EMBASSY
5654V15




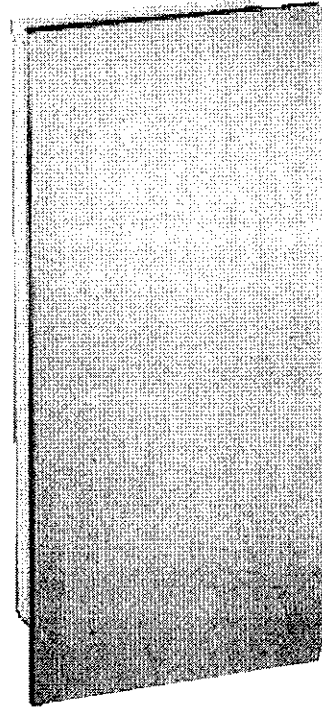
EMBASSY
5634S21




ALL EMBASSY SERIES
MEETS A.D.A.
PROJECTION CRITERIA.

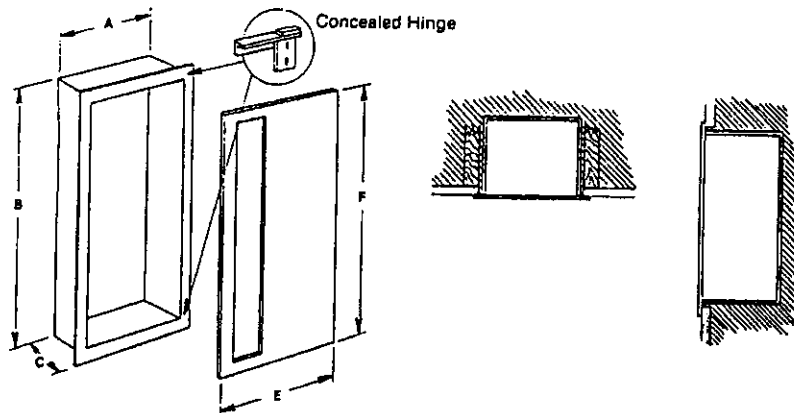


EMBASSY
5654V15 



EMBASSY
5634S21 

EXPLODED VIEW
REFER TO DIMENSIONS TABLE



DIMENSIONS IN INCHES

DOOR MATERIAL & SERIES #					TRIM STYLE	TUB I.D.			DOOR O.D.		WALL OPENING NON-RATED			** ACCOMMODATES FOLLOWING J.L. EXTINGUISHERS
STEEL	ALUM.	STAINLESS STEEL	BRONZE	BRASS		A	B	C	E	F	W	H	D	
5614	5624	5634	5644	5654	TRIMLESS	10 1/2"	24"	5 3/4"	12 3/4"	26 1/4"	11 1/2"	25"	6"	Cosmic 2 1/2E, 5E, 5X, 6E, 10E Galaxy 2 1/2, 5, 5 1/2, 6, 10 Sentinel 5, Mercury 2 1/2, 5
5714	5724	5734	5744	5754	TRIMLESS	16"	32"	7 3/4"	18 1/4"	34 1/4"	17"	33"	8"	Any Cosmic, Any Galaxy, Grenadier P, Sentinel 5, 10, 15, Mercury 2 1/2, 5, Saturn 15, 25
5514	5524	5534	5544	5554	TRIMLESS	18"	18"	7 3/4"	20 1/4"	20 1/4"	19"	19"	8"	2 1/2" fire department valve
5814	5824	5834	-	-	TRIMLESS	32"	32"	7 3/4"	34 1/4"	34 1/4"	33"	33"	8"	1 1/2" or 2 1/2" x 1 1/2" rack unit and a 2 1/2" fire department valve and a fire extinguisher
-	-	-	5844	5854	TRIMLESS	30"	30"	7 3/4"	32 1/4"	32 1/4"	31"	31"	8"	1 1/2" rack unit and a fire extinguisher
5914	5924	5934	5944	5954	TRIMLESS	16"	40"	8 3/4"	18 1/4"	42 1/4"	17"	41"	9"	2 1/2" fire department valve and a fire extinguisher