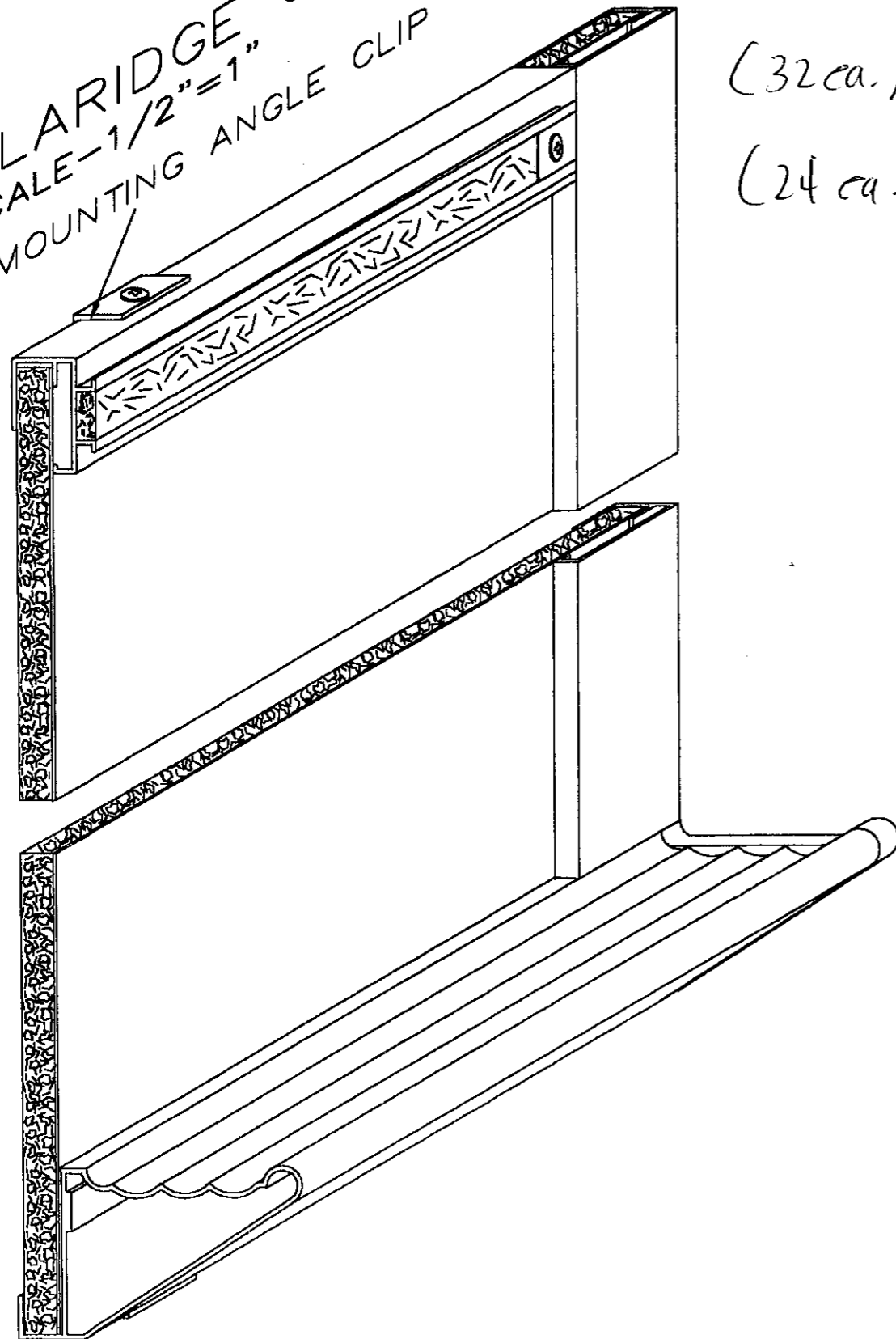
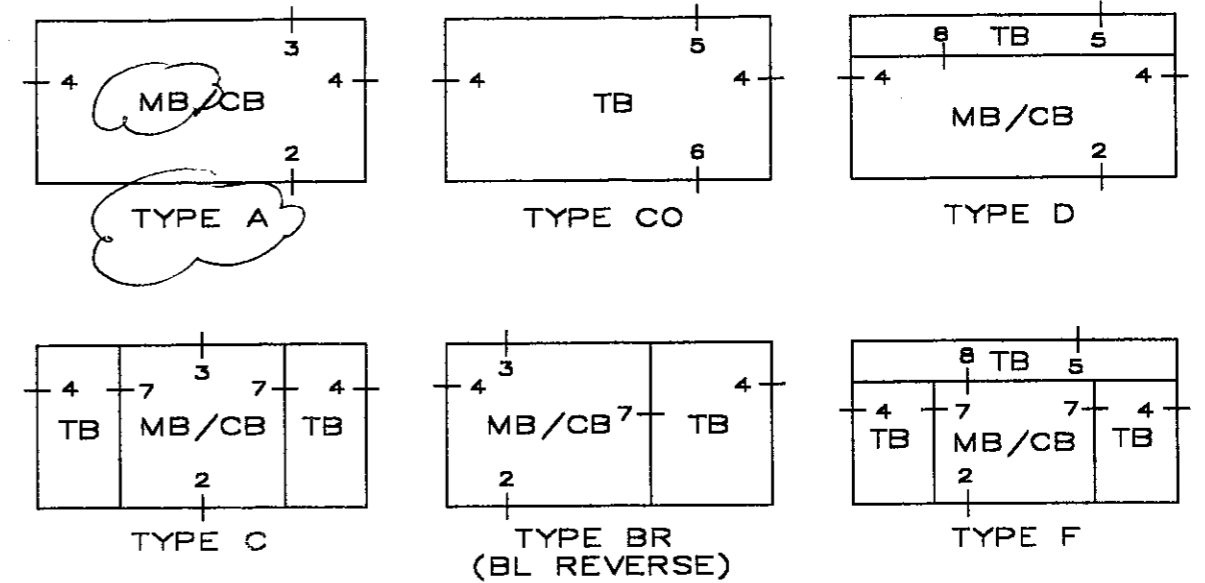


CLARIDGE SERIES 1
 SCALE - 1/2" = 1"
 MOUNTING ANGLE CLIP



(32 ea.) 4' x 4' W

(24 ea.) 4' x 8' W



PANEL SIZES UP TO 4'-0 HIGH X 16'-0" WIDE IN ONE PIECE
 ALL PANELS ARE APPROX. 1/2" THICK OVERALL

| PORCELAIN ENAMEL PANEL TYPE | CORE | PANEL BACKING |
|---|--|--|
| 24 GA. VITRACITE CHALKBOARD OR 24 GA. LCS MARKERBOARD | STANDARD DURACORE OPTIONAL MDF PARTICLE BOARD | STANDARD .002 FOIL OPTIONAL .005 FOIL .015 SHEET MYLAR STEEL |

| TACKBOARD PANELS | SERIES NUMBER | PANEL MAKE-UP |
|------------------|---------------|---|
| CLARIDGE CORK | #1100 | CLARIDGE COLORED CORK ON HARDBOARD |
| TAN NUCORK | #550 | TAN NUCORK ON HARDBOARD |
| FABRICORK | #1550 | VINYL FABRIC ON CORK UNDERLAY ON HARDBOARD |
| FABRICORK | #1380A | VINYL FABRIC ON DURACORE |
| DESIGNER SERIES | #3102 | DESIGNER FABRIC ON CORK UNDERLAY ON HARDBOARD |
| HOOK-FAB | #934 | HOOK-FAB ON CORK UNDERLAY ON HARDBOARD |

CLARIDGE SERIES 1
 FACTORY BUILT UNITS
 TRIM SECTION DETAILS
 SCALE=FULL SIZE

MOUNTING ANGLE CLIPS
 TYPICAL AT TOP & BOTTOM OF ALL UNITS.

