

Activity ID	Activity Description	Orig Dur	Rem Dur	Early Start	Early Finish
W310	Install Cabinets & Counter Tops	5	5	20OCT05	26OCT05
W360	Mechanical Finish	5	5	20OCT05	26OCT05
W330	Carpet & Vinyl	10	10	27OCT05	09NOV05
W340	Plumbing Finish	5	5	27OCT05	02NOV05
W380	Toilet Partitions & Access.	3	3	03NOV05	07NOV05
W370	Acoustical Ceiling Tile	5	5	10NOV05	16NOV05
East Pod					
E390	Interior Wall Layout	5	3	20JUL05A	27JUL05
E240	Install H.M. Door & Window	10	10	28JUL05	10AUG05
E110	Install SIPS Panels	6	6	04AUG05	11AUG05
E290	Fire Sprinkler System	10	10	10AUG05	23AUG05
E200	Interior Metal Stud Framing	15	15	22AUG05	12SEP05
E210	Plumbing Rough In	10	10	31AUG05	14SEP05
E220	Electrical Rough In	15	15	31AUG05	21SEP05
E230	Mechanical Rough In	20	20	29SEP05	26OCT05
E250	Hang Drywall	10	10	04OCT05	17OCT05
E260	Tape & Finish Drywall	10	10	13OCT05	26OCT05
E270	Interior Painting	10	10	27OCT05	09NOV05
E280	Acoustical Ceiling Grid	5	5	03NOV05	09NOV05
E320	Restroom Tile	10	10	03NOV05	16NOV05
E350	Electrical Finish	10	10	03NOV05	16NOV05
E300	Drop Sprinkler Heads	5	5	10NOV05	16NOV05
E310	Install Cabinets & Counter Tops	5	5	10NOV05	16NOV05
E360	Mechanical Finish	5	5	10NOV05	16NOV05
E330	Carpet & Vinyl	10	10	17NOV05	02DEC05
E340	Plumbing Finish	5	5	17NOV05	23NOV05
E380	Toilet Partitions & Access.	3	3	28NOV05	30NOV05
E370	Acoustical Ceiling Tile	5	5	05DEC05	09DEC05
Commons Area					
C100	Erect Structural Steel / Metal	4	4	25JUL05A	28JUL05
C240	Install H.M. Door & Window	2	2	29JUL05	01AUG05
C120	Rough In Spare Conduits	3	3	01AUG05*	03AUG05
C90	Pour Slab on Grade	4	4	04AUG05	09AUG05
C280	Install Glu Lams	2	2	08AUG05*	09AUG05
C290	Fire Sprinkler System	5	5	24AUG05	30AUG05
C110	Install Mtl Decking at Roof	5	5	26AUG05	01SEP05
C200	Interior Metal Stud Framing	5	5	13SEP05	19SEP05
C210	Plumbing Rough In	5	5	20SEP05	26SEP05

Start Date: 17JAN05
 Finish Date: 09JAN06
 Data Date: 25JUL05
 Run Date: 27JUL05 14:44

Legend:
 [Bar with arrow] Early Bar
 [Bar with arrow] Progress Bar
 [Bar with arrow] Critical Activity

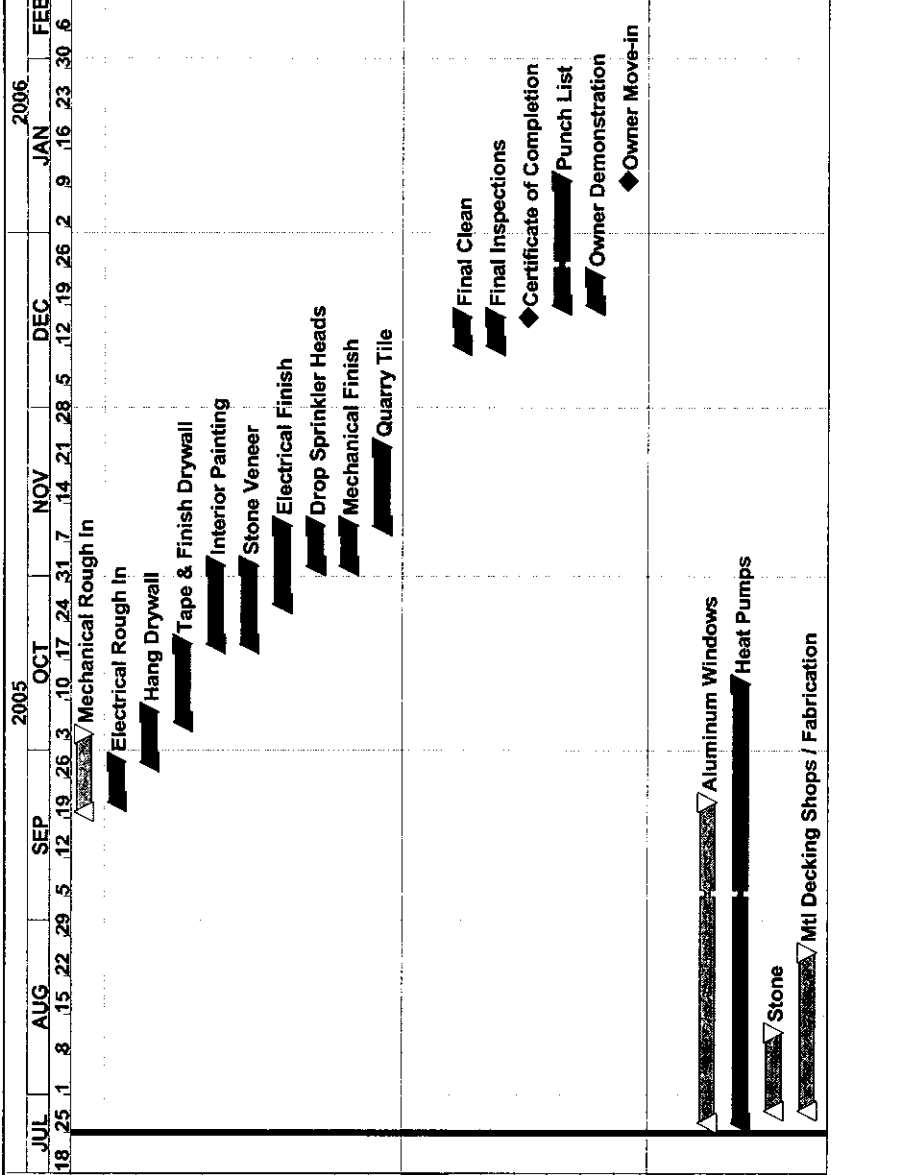
Sheet 2 of 3

Taylor Kohrs
 Laramie County Community College
 Classic Schedule Layout

Taylor Kohrs
 A TAYLOR CONSTRUCTION COMPANY
 This schedule reflects current planning. Taylor Kohrs LLC reserves the right to make ongoing, but reasonable adjustments thereby restructuring start dates, sequences, durations, completion dates, etc.

TAYLOR KOHRS
 A TAYLOR Construction Group Company

© Primavera Systems, Inc.



Activity ID	Activity Description	Orig Dur	Rem Dur	Early Start	Early Finish
C230	Mechanical Rough In	10	10	20SEP05	03OCT05
C220	Electrical Rough In	5	5	22SEP05	28SEP05
C250	Hang Drywall	7	7	29SEP05	07OCT05
C260	Tape & Finish Drywall	10	10	06OCT05	19OCT05
C270	Interior Painting	10	10	20OCT05	02NOV05
C390	Stone Veneer	10	10	20OCT05	02NOV05
C350	Electrical Finish	10	10	27OCT05	09NOV05
C300	Drop Sprinkler Heads	5	5	03NOV05	09NOV05
C360	Mechanical Finish	5	5	03NOV05	09NOV05
C320	Quarry Tile	10	10	10NOV05	23NOV05
Close-out					
580	Final Clean	5	5	12DEC05	16DEC05
660	Final Inspections	5	5	12DEC05	16DEC05
670	Certificate of Completion	0	0		16DEC05
460	Punch List	15	15	19DEC05	09JAN06
550	Owner Demonstration	5	5	19DEC05	23DEC05
660	Owner Move-in	0	0		09JAN06
Long Lead Materials					
210	Aluminum Windows	40	40	27JUL05*	21SEP05
230	Heat Pumps	55	55	27JUL05*	12OCT05
200	Stone	10	10	29JUL05*	11AUG05
220	Mtl Decking Shops / Fabrication	20	20	29JUL05*	25AUG05

Start Date: 17JAN05
 Finish Date: 09JAN06
 Data Date: 25JUL05
 Run Date: 27JUL05 14:44

Legend:
 Early Bar
 Progress Bar
 Critical Activity

© Primavera Systems, Inc.

Sheet 3 of 3

Taylor Kohrs
 Laramie County Community College
 Classic Schedule Layout

Taylor Kohrs
 A TAYLOR CONSTRUCTION COMPANY

This schedule reflects current planning. Taylor Kohrs LLC reserves the right to make ongoing, but reasonable adjustments thereby rearranging start dates, sequences, durations, completion dates, etc.

TAYLOR KOHRS
 A TAYLOR Construction Group Company